

Valley Gardens Phase 3

March 2026

This newsletter provides the latest on the Valley Gardens project including upcoming road closures planned for the final stages of work on the new aquarium junction.

Aquarium junction

Construction of the new traffic light-controlled junction is progressing well. The old islands have been removed and the new layout is now taking shape. This includes the new crossing points and much wider pedestrian spaces on each side of the junction.

The construction of the new traffic islands is due to start on 13 April. This will need temporary traffic lights to be installed. These will be replaced by permanent traffic lights which are expected to be operational in mid-May. The temporary traffic lights will not operate in the same way as the permanent lights and delays are expected during this time. You may wish to consider alternative routes if driving through the area.

During this time, the pedestrian crossing on Marine Parade will remain closed. To reach the seafront, the best place to cross is Grand Junction Road (west of the pier).

Nighttime resurfacing

The resurfacing will be completed overnight from 19 April for approximately two weeks. During this work, the Aquarium junction will



be closed from 8pm to 6am with diversion routes in place.

For safety reasons, the only crossing points open during the nighttime resurfacing will be at East Street and Madeira Place.

Seafront buses will be diverted via Edward Street. Other traffic will be diverted via Old Shoreham Road and Edward Street.

Madeira Drive

During some of the nighttime closures, Madeira Drive will be closed at its entrance next to the aquarium. Access will be available for businesses from Dukes Mound. Cars will be able to exit parking spaces in the usual way. Madeira Drive will remain open to pedestrians and cyclists.

Bus shelters

The new bus shelters have now been installed. Because of availability, the shelter at Castle Square is temporary and is due to

be replaced at a later date with one that has side panels.

New public space

The new public space between the Royal Pavilion and war memorial is nearing completion. New trees have been planted this month including Elms, Gleditsia and Gingko. Street furniture, including seating will be installed before the summer.

Steine Gardens

The contractor will be removing equipment from the gardens over the next few weeks. Construction will then start on the new paths ready for turfing of the gardens. The

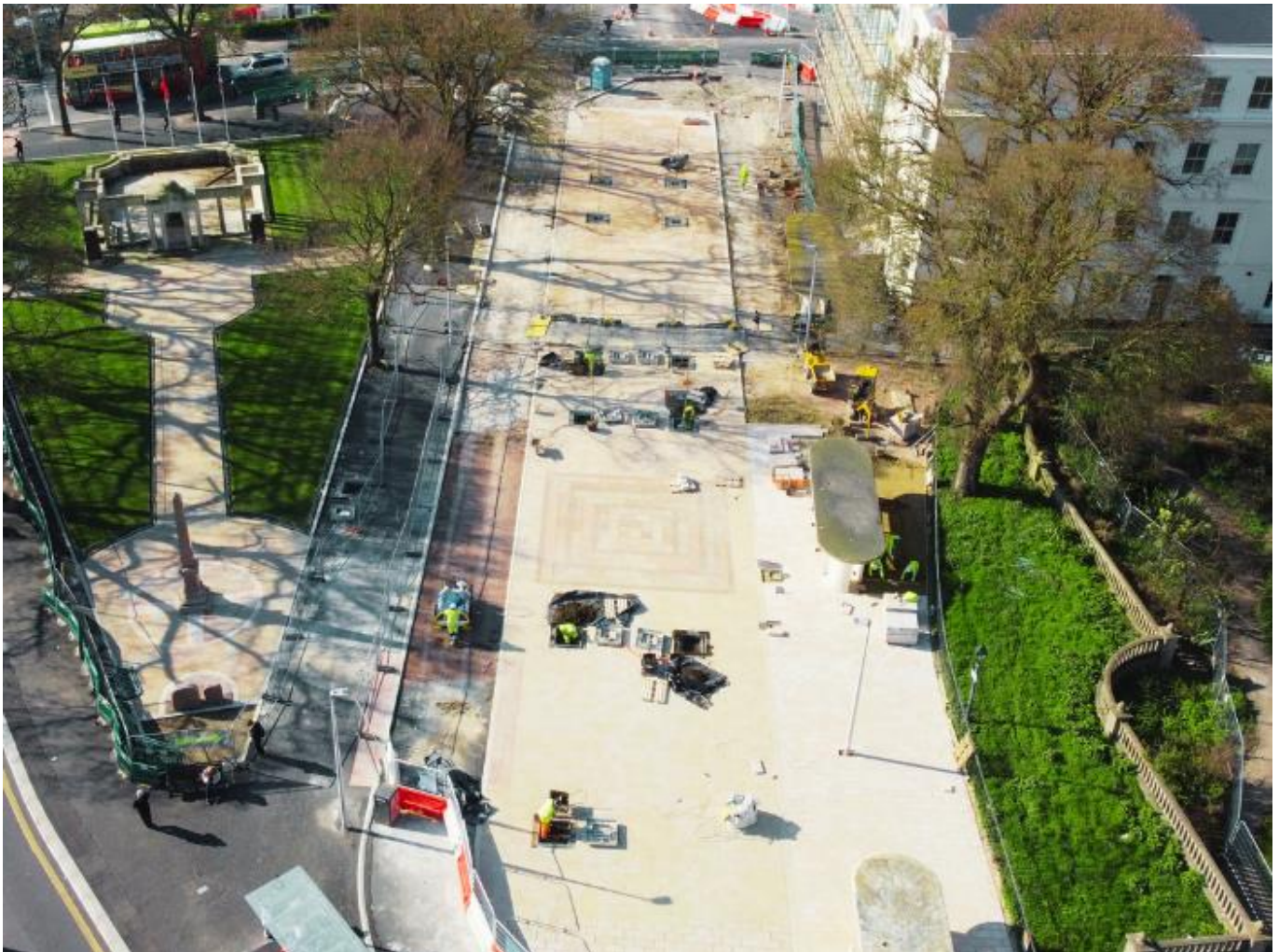
remaining trees and plants will be added in early autumn to align with planting seasons.

Further information

We thank you for your patience as the work continues.

If you would like more information, please see www.brighton-hove.gov.uk/valley-gardens

For enquiries, please contact transport.projects@brighton-hove.gov.uk



Work continuing on the new public space between the Royal Pavilion and war memorial